



Kinship

**Soroptimist International London Chilterns Region
IWD conference March 2022**

Kate O'Brien - Director of Business Development & Programmes

What is kinship care?

- Any child being **raised full-time by a relative or friend** because their parents are unable to look after them. Often due to **difficult family circumstances**
- There are almost three times the number of children growing up in kinship care than foster care - around 200,000 children
- In England, more children are leaving care on a Special Guardianship Order than Adoption Order for third consecutive year
- More prevalent in non-white ethnic groups – 1 in 37 children in black ethnic group in kinship care (1 in 74 in general population)
- More prevalent in the poorest areas - 3/4 of children in kinship care are growing up in a deprived household

Who are kinship carers?

- As a group, kinship carers are older, poorer and in worse health than any other group raising children
- In our recent survey of over 1,600 kinship carers:
 - 92% were female
 - 65% were age 55+
 - 83% were grandparents (around 50% from the 2011 census)
- 26% had experienced child on carer violence
- 70% said they're not getting support they need from their local authority
- 7 out of 10 kinship carers report feelings of isolation, depression or anxiety

Who are kinship children?

- 62% have long-term physical and mental health needs
- Of those with a formal diagnosis:
 - 40% had anxiety or depression
 - 38% behavioural issues
 - 38% attachment disorder
- 36% children in kinship care have special educational needs - 3 x national average
- 73% of SGOs were made due to **abuse and neglect**, 15% family dysfunction

(DfE data for the year ending 31 March 2021) (Kinship State of the Nation report Oct 2021)

What are the key challenges kinship carers face?

- Postcode lottery of support
- Route into kinship care and legal order can vary support amongst siblings
- Contact with family members
- Poverty
- Housing
- Lack of awareness and understanding of kinship care

'Because of you' - a poem



About Kinship

1

Kinship families
at the heart of everything we
do.



2

**Leading national kinship care
charity** - 20 years experience of
supporting kinship families.



3

We are **uniquely connected** to
special guardians and other kinship
carers through our community and
services.

4

We **continuously consult** with
carers in order to revise and
develop our service to ensure
we understand and respond to
needs in constantly
changing environment.



5

Represent special guardians and kinship
carers **locally, regionally and nationally**
as board members of the Kinship Care
Alliance and regional and national
Adoption Special Guardianship Leadership
Boards



6

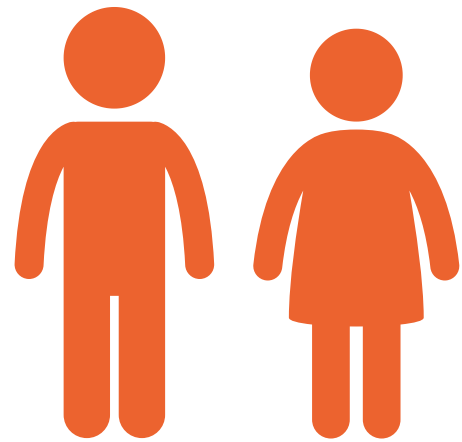
Our programmes and services
are **evidence-informed** and
demonstrate **value for money**.

Angela's story



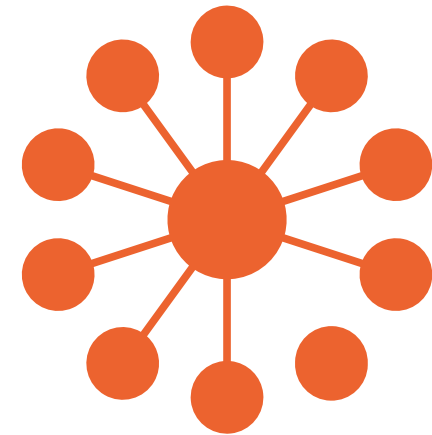
Outcomes for our programmes & services

Reduced concern with children's behaviour



Carers are supported to develop practical strategies to support children's health and well-being

Reduced isolation



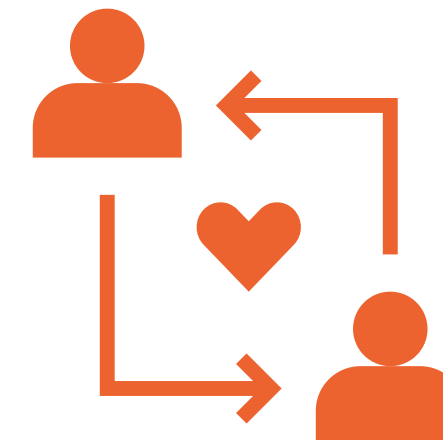
Carers connect with people in the same situation, share experiences and seek advice from peers

Reduced financial concerns



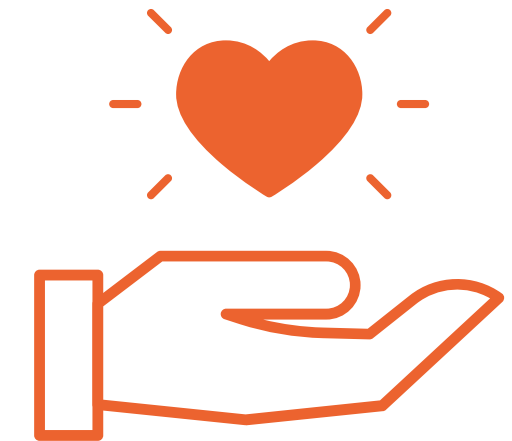
Carers are supported to access welfare benefits and emergency grants

Improved relationships



Contact and family relationships improved

Enhanced confidence



Kinship carers feel more able to cope with their caring role, building resilience so reducing risk of placement breakdown

What can YOU do?

- Read more about kinship care so you're well informed
- Get in touch with your local MP and councillors to ask what they're doing to support kinship carers
- Talk to others about kinship care to raise awareness
- Donate at <https://kinship.org.uk/get-involved/donate-to-kinship/>

Further information

- **Public Law Working Group recommendations:** assessment and preparation. Including pre-proceedings. <https://www.kinship.org.uk/news/grandparents-plus-responds-to-the-public-law-working-group-special-guardianship-order-recommendations/>
- **Parliamentary Taskforce on Kinship Care recommendations:** Raise the profile of kinship carers, rights for kinship carers, support for kinship carers. There is a recommendation of increasing scrutiny of kinship care services and support as part of OFSTED inspections. <https://www.kinship.org.uk/news/parliamentary-taskforce-report-of-kinship-care/>
- **Adoption & Special Guardianship Leadership Board Special guardian support guide** evidence-based guide to developing services and providing support for special guardians. <https://kinship.org.uk/for-professionals/resources-to-support-special-guardians/special-guardianship-support-service-guide/>
- **Evaluation of Kinship Connected** – benefits of one-to-one and peer support with 20% ROI: <https://www.kinship.org.uk/news/kinship-connected-evaluation/>
- **Economic case for investment in kinship care** by Nicol Economics: <https://www.kinship.org.uk/news/the-economic-case-for-kinship-care/>
- **Report by the Local Government Association:** Kinship care has a key role in post Covid recovery for local authorities. <https://www.local.gov.uk/child-centred-recovery>
- **Kinship surveys of kinship carers:** we run a number of surveys during the year to get insight on key issues and needs https://kinship.org.uk/for-professionals/resources/kinship_surveys



For further information get in touch:



Kate O'Brien

**Director of Business Development &
Programmes**

Kate.Obrien@kinship.org.uk



07968 149915



@kate_a_Obrien