

Be
You

Modern slavery and Human Trafficking in Bedfordshire

Roni Cherneva, MSHT Co-Ordinator



Main Objectives

- Briefly explain what modern slavery is
- Provide an overview of the changing national landscape in relation to modern slavery
- Outline the current modern slavery and human trafficking picture in Bedfordshire and what are the prevalent exploitation forms in the county
- Explore what are the emerging and re-emerging trends
- Provide insight into my role as a Modern Slavery and Human Trafficking Co-Ordinator and insight into the Victim Liaison Officer role (VLOs)
- Highlight your role in identifying potential victims or people vulnerable to exploitation and supporting us and the VLOs to combat exploitation and trafficking

Bedford
You



Bedfordshire Police

Compassionate | Courageous | Inclusive | Professional | Proud

What is modern slavery?

Modern Slavery is an encompassing term for slavery, trafficking, servitude and forced or compulsory labour

It is a highly organised criminality led by small, medium or large OCGs with various level of sophistication;

It is a high profit, low risk crime where people are treated as commodities and trafficked for financial gain

It is considered a serious offence carrying life imprisonment





Bedfordshire Police

Compassionate | Courageous | Inclusive | Professional | Proud

Changes to the national modern slavery landscape

New Modern Slavery Bill -

aimed at increasing accountability in supply chains for commercial and public organisations with total turnover of £36 million or over

New draft of the Victims Bill released in May 2022 -

aimed at improving victims' journey through the CJS, ensuring their voices are heard, and that they are supported better to cope and recover, and engage with the CJS

Brexit Freedom Bill and Bill of Rights Bill -

aim to reform the law relating to EU laws and human rights

NRM Reform

New Independent Anti-Slavery Commissioner and new Modern Slavery Strategy

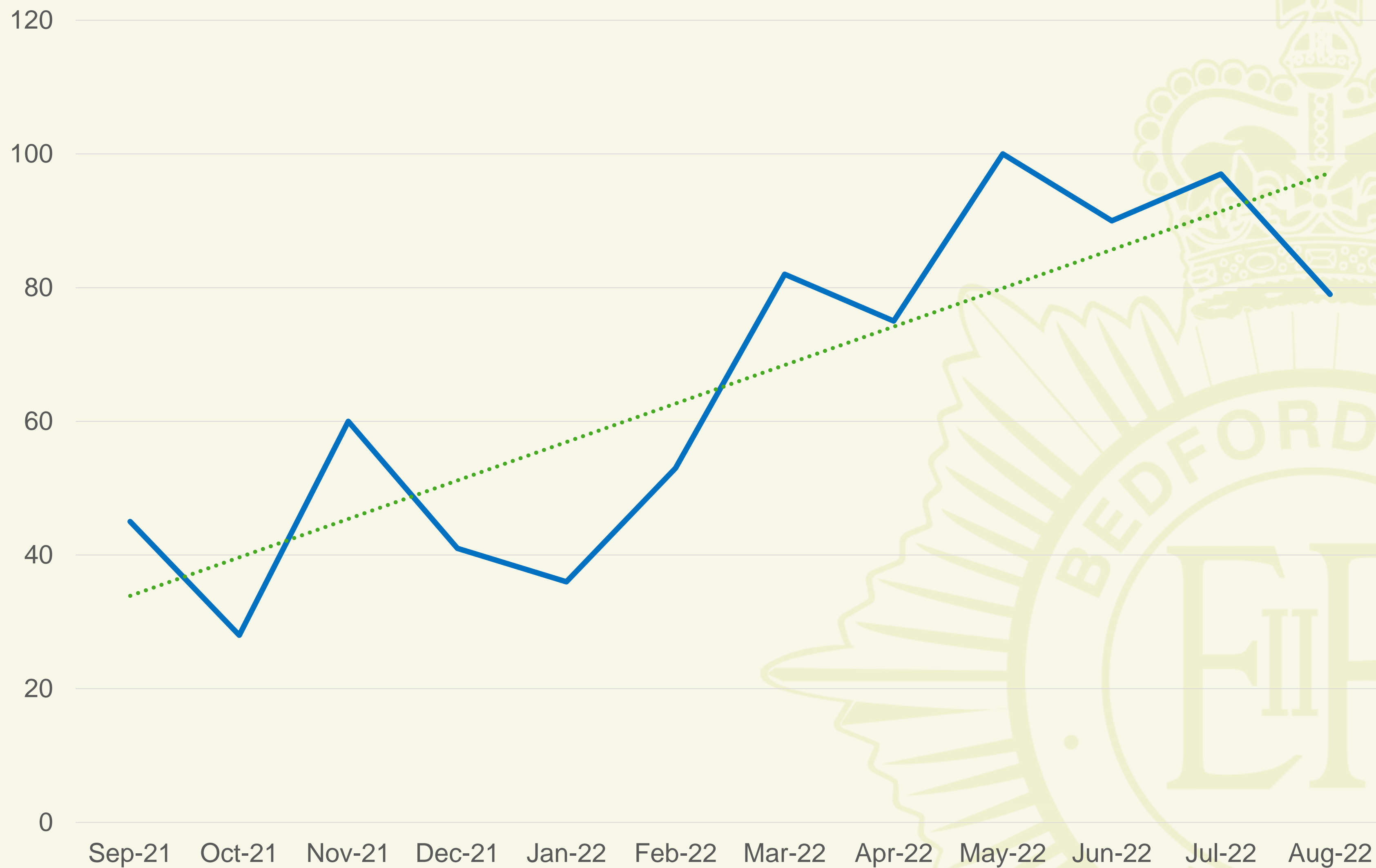


Ministry
of Justice

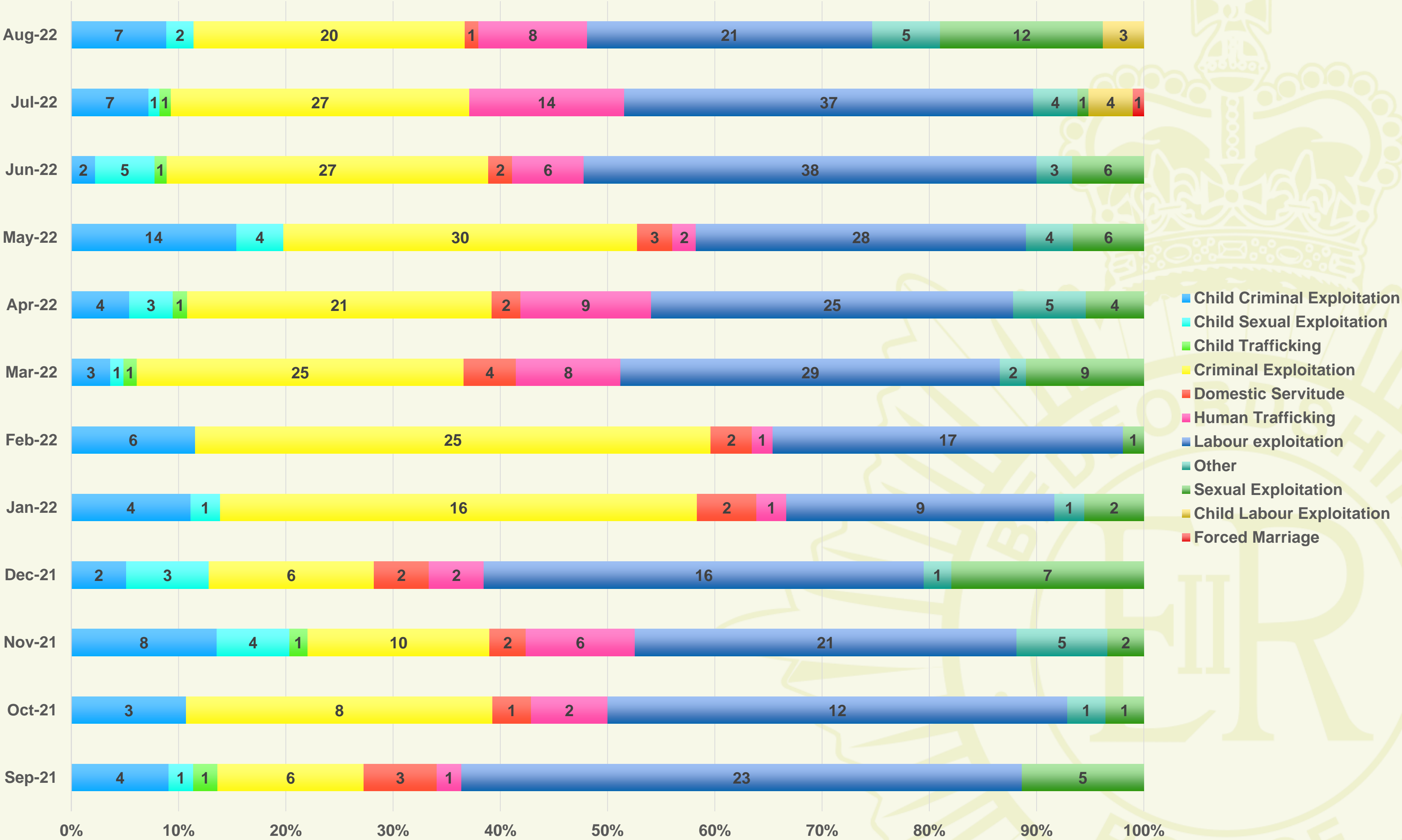
Draft Victims Bill

Be You

Total Incidents by Month

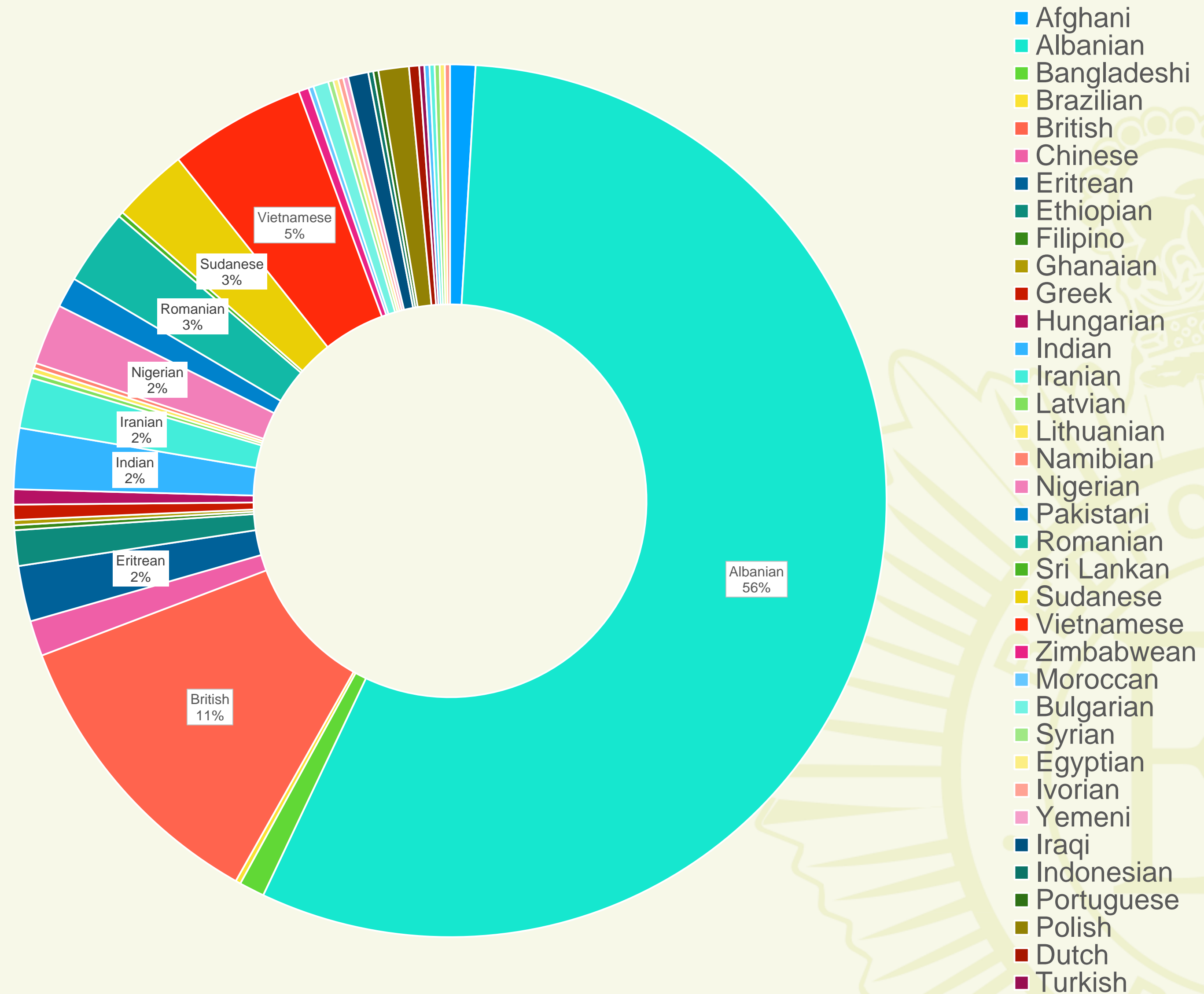


Primary Exploitation Type by Month



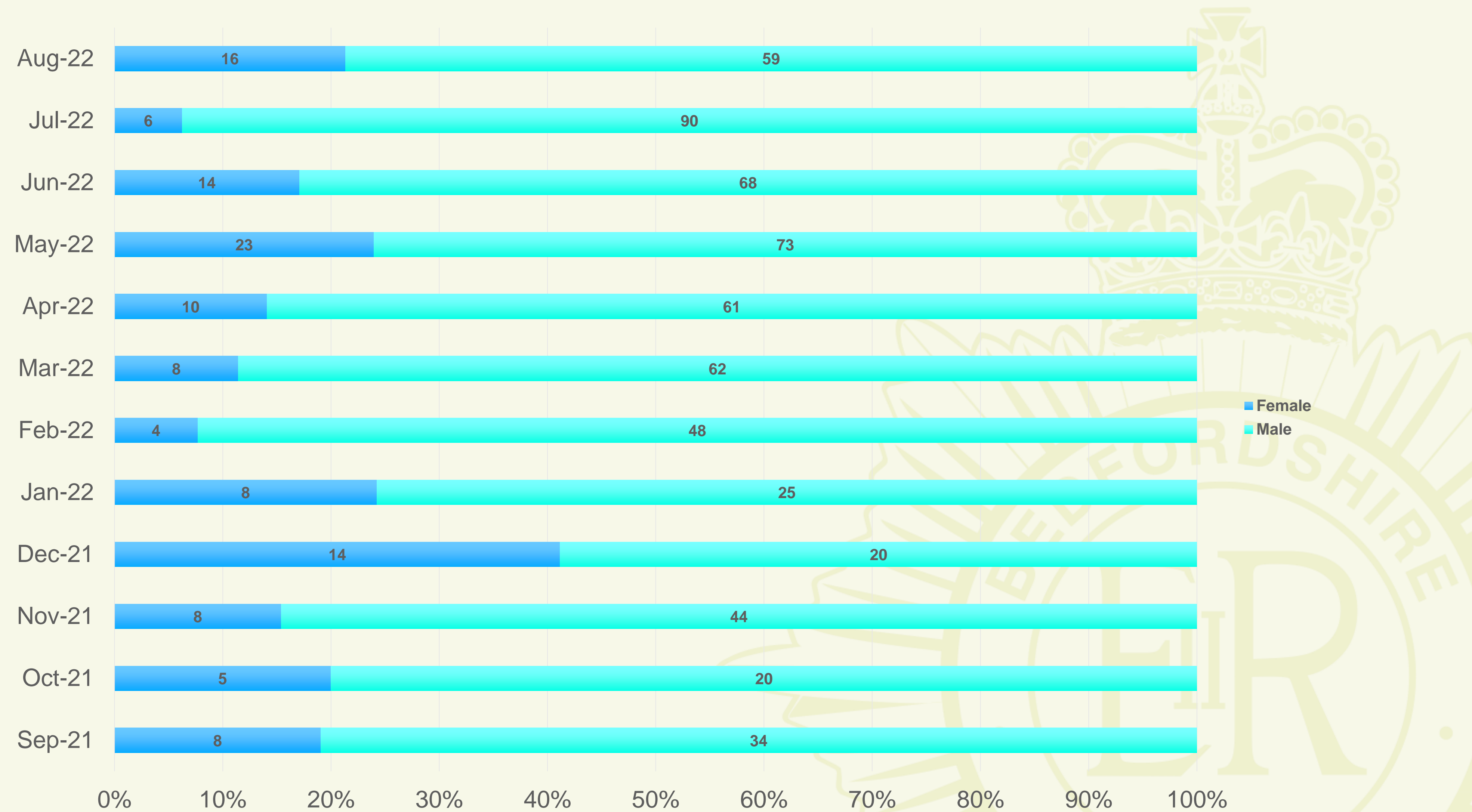
OFFICIAL

Nationality of Victims where known



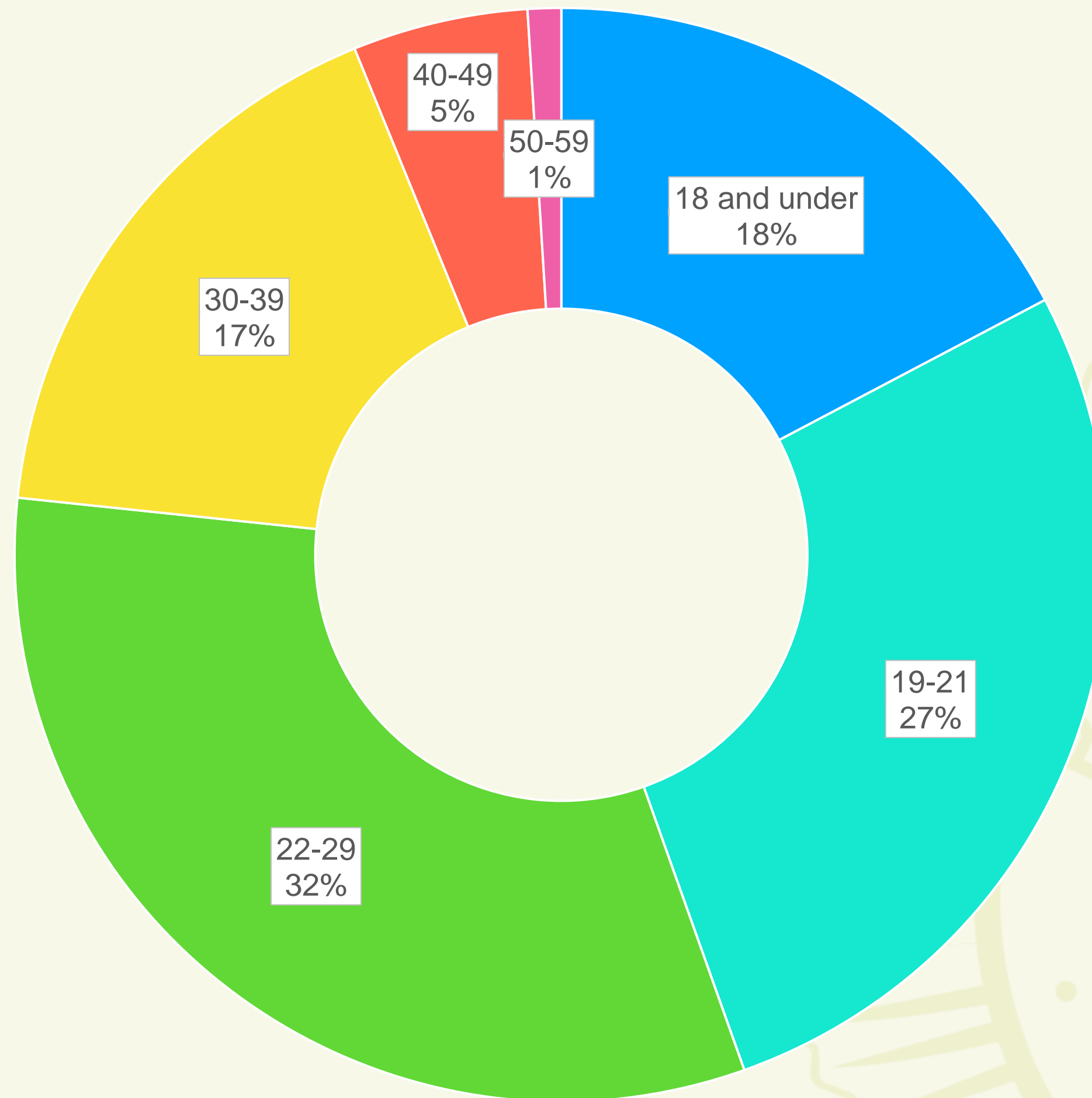
OFFICIAL

Gender by Month where known



OFFICIAL

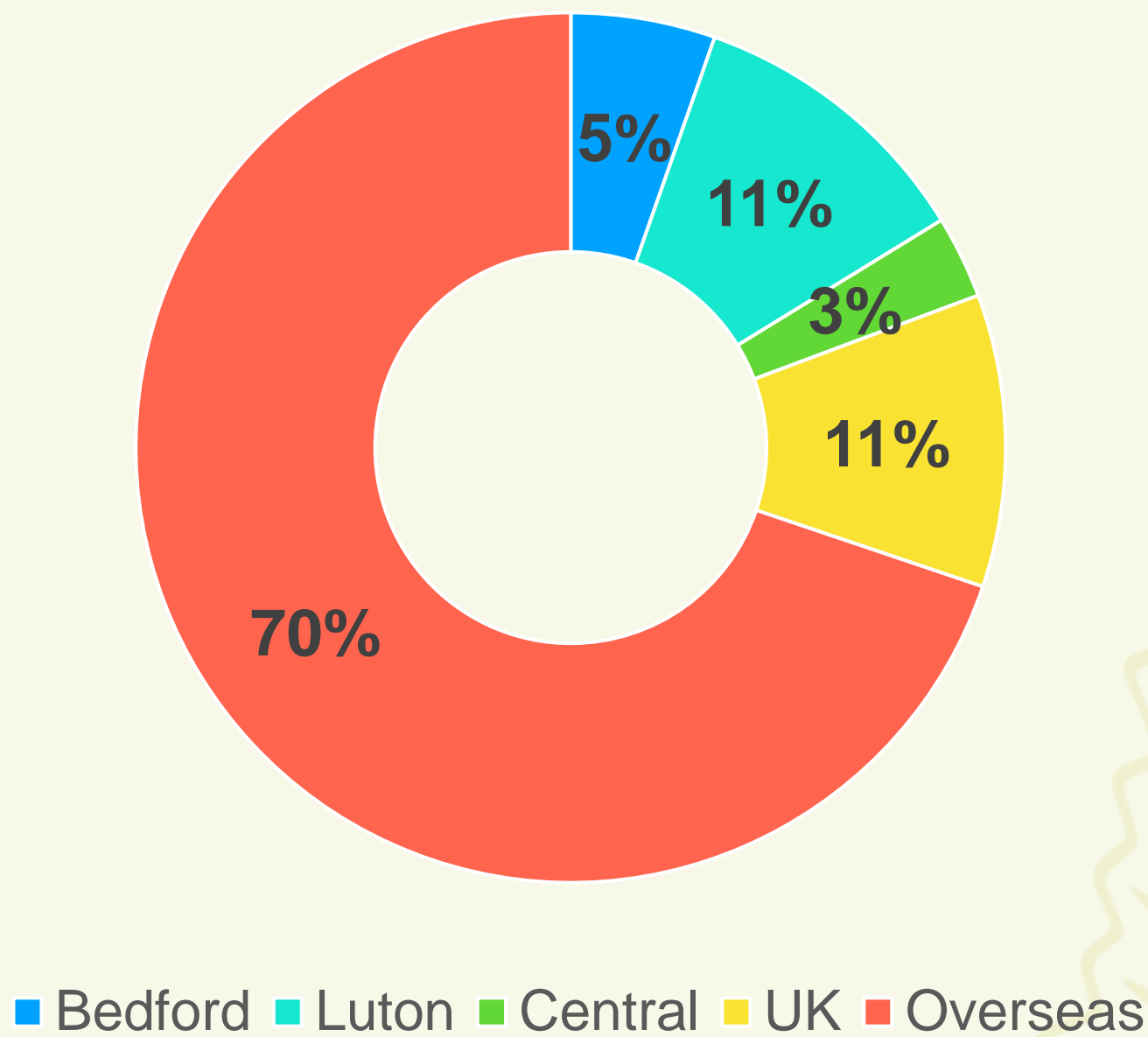
Victim Age where known



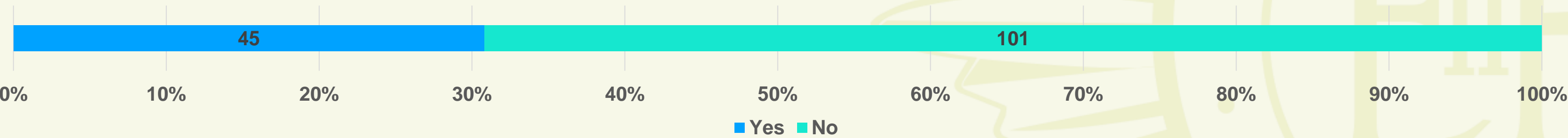
OFFICIAL

Breakdown of NRM Referrals

Location of exploitation



Are there links to County Lines?



OFFICIAL



Bedfordshire Police

Compassionate | Courageous | Inclusive | Professional | Proud

Victims

Anyone can be at risk of falling victim to Modern Slavery

Children

In care	Previous victim	Excluded from school	Isolated	Migrant	Substance misuse
Parental Domestic abuse	Poor Mental Health	Neglect	Homeless	Learning Disability	Lack of belonging

Vulnerable Adults

Substance misuse	Mental health	Learning disabilities
Poverty/Homeless	Culturally isolated	Former victims of modern slavery



Labour Exploitation



- The largest-ever modern slavery ring uncovered in the UK has been broken up after a three-year investigation into its activities. Some of its 400 victims worked for as little as 50p a day.
- Their labour earned millions for members of a criminal gang led by a Polish criminal family, which preyed on the homeless, ex-prisoners and alcoholics from Poland. Gang members were jailed for between 11 and 5 years.
- The well-organised criminal gang led by the Brzezinski family tricked and then trafficked vulnerable men and women – ranging in age from 17 to over 60 – to Britain with the promise of gainful employment but instead housed them in squalor and used them as what a judge described as “commodities”.

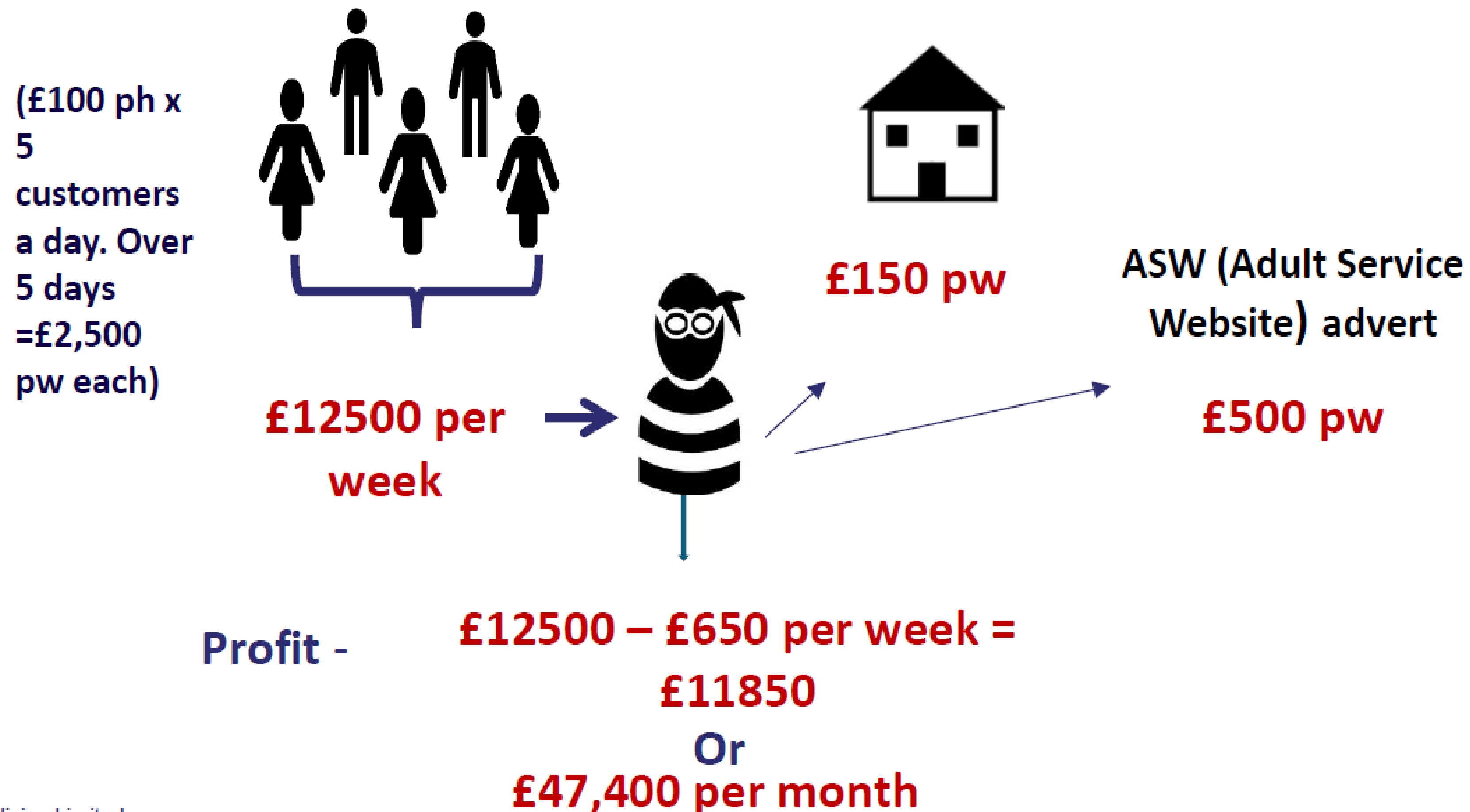


Bedfordshire Police

Compassionate | Courageous | Inclusive | Professional | Proud

Sexual Exploitation

Modern Slavery Business Model for Sexual Exploitation





Bedfordshire Police

Compassionate | Courageous | Inclusive | Professional | Proud

How Traffickers and Exploiters recruit and control victims?

- S (suspect) grooms V (victim) online **with a view** to meeting to commit a sexual assault on V.
- S₁ directs V's travel to a hotel intending to rape or commit a sexual assault on V.
- S₁ recruits women in Eastern Europe arranging for them to come to the UK to work as sex workers. S₂ meets them and transports them to the brothel. S₃ takes receipt of them and manages their sex work within the brothel. Half of their earnings are taken from them.
- The recruiters, transporters and anyone else involved may be guilty of trafficking, conspiracy to traffic, or aiding or abetting trafficking if it can be shown they knew or ought to have known the intended purpose.



Bedfordshire Police

Compassionate | Courageous | Inclusive | Professional | Proud

Emerging and Re-emerging trends – Eastern European sexual exploitation

- Women are advertised on Adult Services websites – they do not have control over these adverts or over the services offered; offenders learnt to adapt their approach of advertising
- Women are moved around the UK to make it harder for authorities and other agencies to intervene
- Women tend to visit private health clinics and doctors for pregnancies/abortions/health issues in the cases they are granted access to healthcare
- Being pregnant and working as a sex worker is a desired option
- Women who engaged with the police/other agencies are asked to report back to exploiters on what they are being asked and what they have been told about exploitation/trafficking
- Letting agents /recruitment agencies and other agencies getting involved in conspiracy of trafficking and exploitation



Bedfordshire Police

Compassionate | Courageous | Inclusive | Professional | Proud

Emerging and Re-emerging trends – Chinese sexual exploitation

- Women usually come from families who acquired debt to loan sharks/the Chinese mafia as a result of gambling addiction or other reasons
- To pay the debt back the woman is forced to go to the UK and start working as a sex worker
- They are advertised on adult services websites although on a much lower scale due to specific Chinese adult services websites
- Women are usually living in a nice, new flat but are not getting paid at all and are not allowed to touch anything in the flat
- Some of them might be exploited into forced labour in nail bars during the day and sexually exploited during the night to make most profit
- All the money they earn go to the mafia to pay toward the debt
- We know very little about Chinese exploitation and way of operating



Bedfordshire Police

Compassionate | Courageous | Inclusive | Professional | Proud

Modern Slavery and Human Trafficking Co- Ordinator

- Partnership work – working with governmental and non-government organisations and charities to ensure we take a multi-agency approach in tackling modern slavery
- Supporting Police Strategic and Tactical Leads for Modern Slavery to ensure any gaps in our police response are identified and addressed
- Delivering training/talks
- Victim engagement and support – planning the support for victims and delivering it (with partners)

Victim Liaison Officers

- Recognise potential victims of Modern Slavery and Human Trafficking and respond immediately to their needs in line with force procedures
- Gather all available material to support an investigation
- Act as the single point of contact (SPOC) for a victim of Modern Slavery and Human Trafficking until an exit strategy is agreed



Bedfordshire Police

Compassionate | Courageous | Inclusive | Professional | Proud

Victim Support

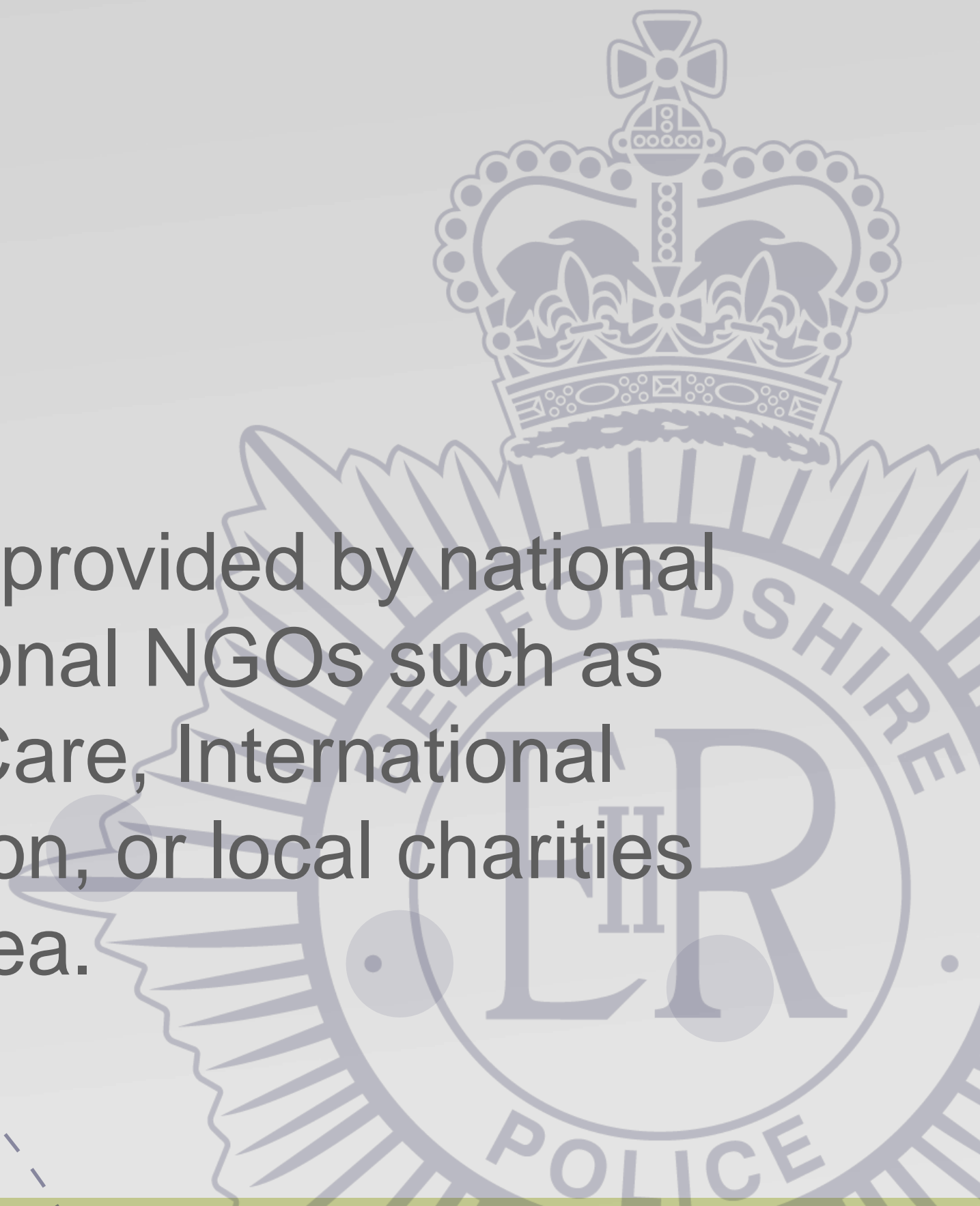
NRM:

The National Referral Mechanism (NRM) is a framework for identifying victims of Human Trafficking or Modern Slavery and ensuring they receive the appropriate support. The support is provided by the Salvation Army and may include:

- A period of reflection and recovery when a person cannot be removed from the UK. The recovery period is intended to give the victim time to recover and escape the influence of traffickers and/or take an informed decision on cooperating with the authorities
- Assistance returning home safely

<https://www.modernslavery.gov.uk/start>

Support also provided by national and international NGOs such as Justice and Care, International Justice Mission, or local charities such as Azalea.





Bedfordshire Police

Compassionate | Courageous | Inclusive | Professional | Proud

Victim Support – what you can do

- Identify potential victims
- Access agencies that can refer victims into the NRM or provide other support
- Inform the appropriate authorities
- Act as a single point of contact and support for victims
- Create VLO packs
- Any other ideas?





Bedfordshire Police

Compassionate | Courageous | Inclusive | Professional | Proud

Victim Support – useful contacts

Police:

in case of emergency **call the police on 999;**

in non-emergency situation **call the police on 101 or use our online reporting service** to report an MDS crime or concern: <https://www.bedfordshire.police.uk/report/Report>

Crimestoppers:

Report non-emergency crime/concern anonymously at <https://crimestoppers-uk.org/give-information> or on 0800 555 111 (24/7)

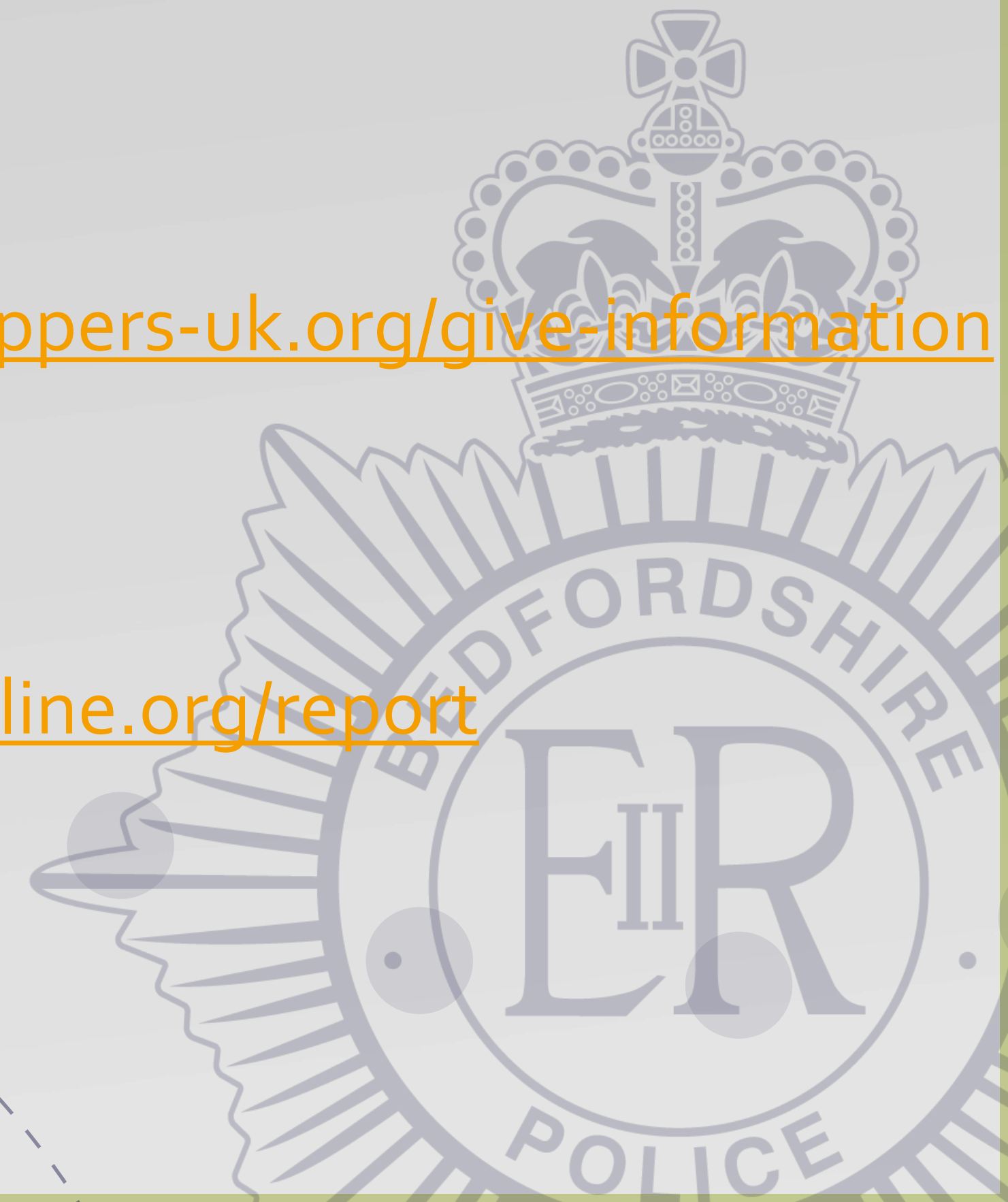
National Modern Slavery Helpline:

Report online (anonymously or not) at <https://www.modernslaveryhelpline.org/report>

Call the 24/7 Referral Helpline on **08000 121 700**

Salvation Army:

They offer a 24-hour confidential Referral Helpline on **0300 3038151**





Thank you for
listening
Any Questions?