

# **SI & SI of Great Britain & Ireland (SIGBI) Programme of Action & Getting Involved**

**Rita Beaumont (Regional Secretary)  
& Pam Robertson (Regional Programme Action  
Officer)**

SILC New Members Session  
24 August 2023

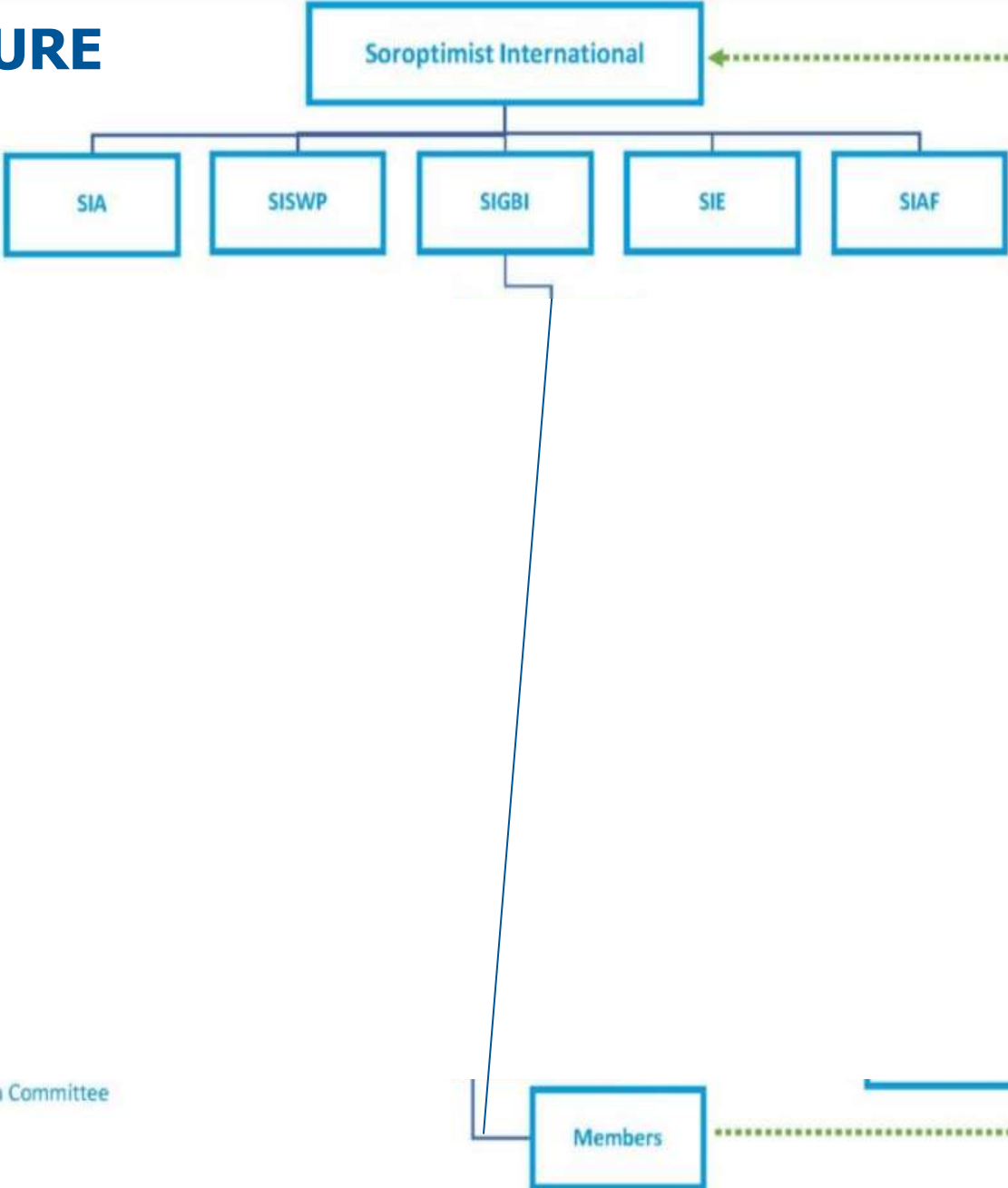
# Soroptimist International



**The world's largest women's service  
organisation**

Women inspiring action,  
*transforming lives*

# SI STRUCTURE



## SI President & the SI Convention

SI President 2021-23  
Maureen Maguire  
SI Convention, Dublin  
27 July 2023

The New SI President  
takes office in January  
2024



**Women inspiring action,  
transforming lives**

## The United Nations – New York



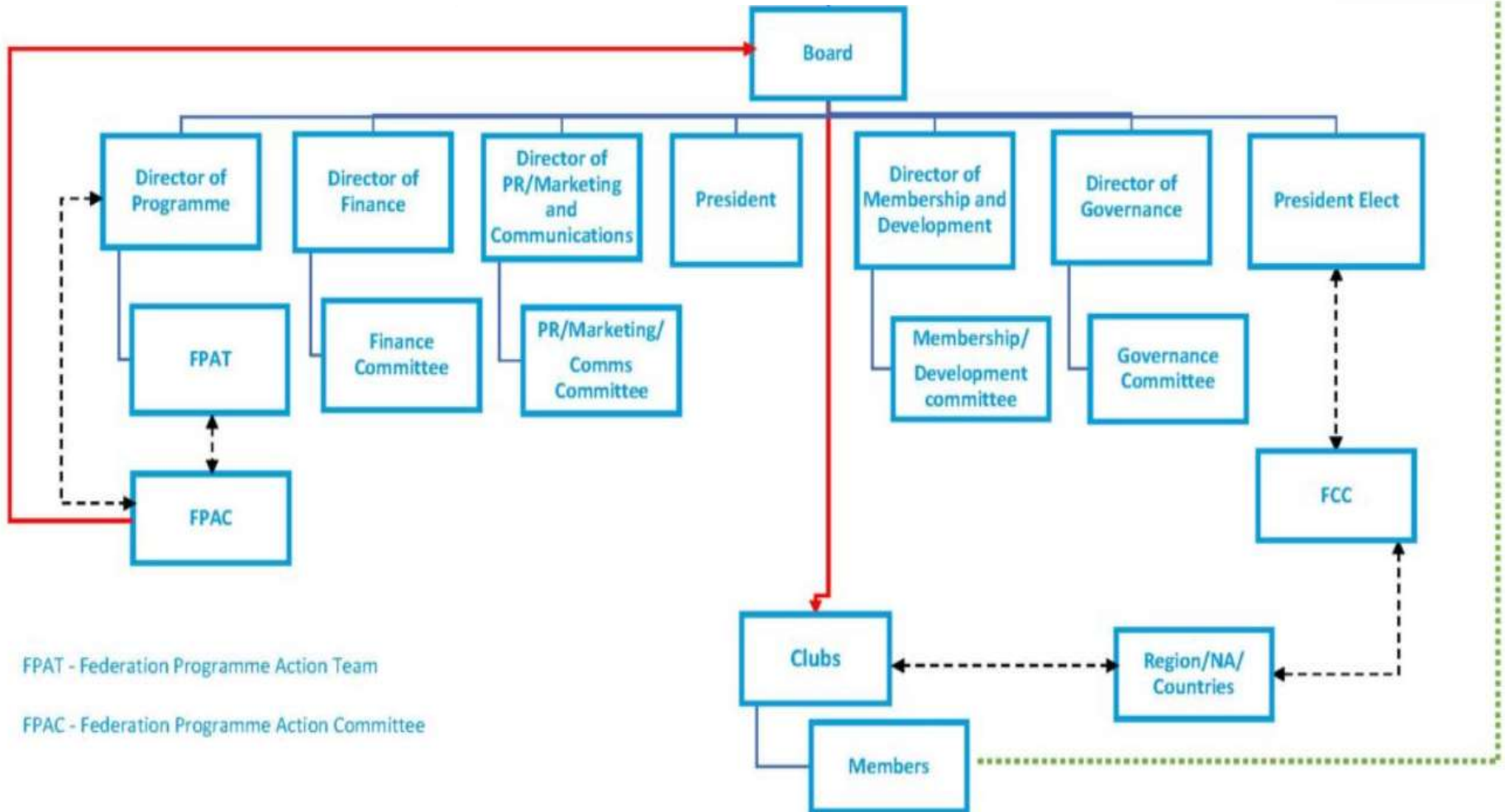
## **UN Economic and Social Council (ECOSOC) & Commission on the Status of Women (CSW)**

- SI & SIGBI both have consultative status at the UN Economic & Social Council (ECOSOC), which gives us a voice on important discussion papers, and allows us to attend the Commission on the Status of Women (CSW) in New York each March, and contribute to the “Agreed Conclusions”.
- CSW was one of the first functional commissions created within ECOSOC and is managed by UN Women.
- CSW has been run online recently which enables more involvement.

# SIGBI STRUCTURE

Soroptimist International

## SIGBI



FPAT - Federation Programme Action Team

FPAC - Federation Programme Action Committee



## **SIGBI**

- Great Britain and the Republic of Ireland
- Asia - India, Pakistan, Nepal, Bangladesh, Sri Lanka
- Caribbean – Barbados, Trinidad & Tobago, St Vincent & Grenadines, Jamaica, Anguilla, Grenada, Turks & Caicos
- Malta
- Jersey
- Isle of Man
- Guernsey





## **Role/Purpose of SIGBI**

- Strategic Plan
- Link between SI, Regions & Clubs, Other Federations
- Liaison with External Organisations
- Promote development of new clubs
- Manage website and the Soroptimist News x 3
- HUB , News Briefings and Mailings
- Organise General Meeting annually
- Oversee the SIGBI Charities

## **SIGBI CHARITIES**

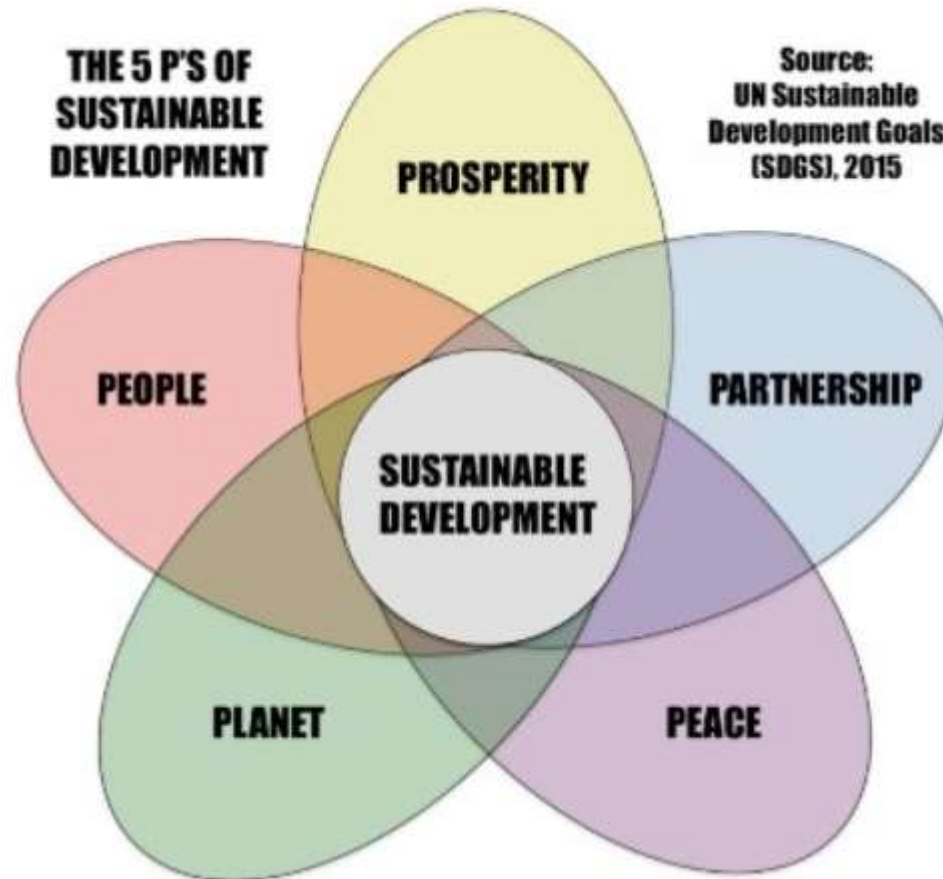
1. **Diamond Education Grant** - funding for female students to help with cost of courses and books/equipment
2. **Emergency Relief Fund** - provides immediate aid to countries which experience nature disasters (eg earthquakes and flooding)
3. **Benevolent Fund** - funding for Soroptimists who are experiencing financial difficulties

<https://sigbi.org/what-we-do/our-charities/>

# Sustainable Development Goals



**THE 5 P'S OF  
SUSTAINABLE  
DEVELOPMENT**



**Source:  
UN Sustainable  
Development Goals  
(SDGs), 2015**

# SI Foundation

International President's Appeal 2021-23

***Opening Doors to a Bright Future***

President Maureen Maguire



The International President's Appeal has become a charitable trust called the "Soroptimist International Foundation" and Human Rights Day will also be SI Foundation Day.

# Federation Programme Action Team

<b>Lindsay Green – Programme Director</b>		
Eleanor Evans, People		SDG 1- 5
Shukla Chattopadhyay, Prosperity		SDG 7 - 11
Anitha Rajarajan, Planet		SDG 6, 12-15
Meenakshi Ray, Peace		SDG 16
Ayushi Kundu, Partnerships		SDG 17

# United Kingdom Programme Action Committee (UKPAC)

UKPAC is a Sub Committee of the SIGBI Programme Action Committee created to enable a focus, when needed, on work in the UK : the Federation Team must focus on all the countries in SIGBI.

- UKPAC exists to act as a support and guide to Regions and Clubs – holding regular meetings, promotions and training
- it acts as the link or conduit between Regions and Clubs encouraging, promoting, and instigating appropriate projects
- It encourages collaboration between Clubs.

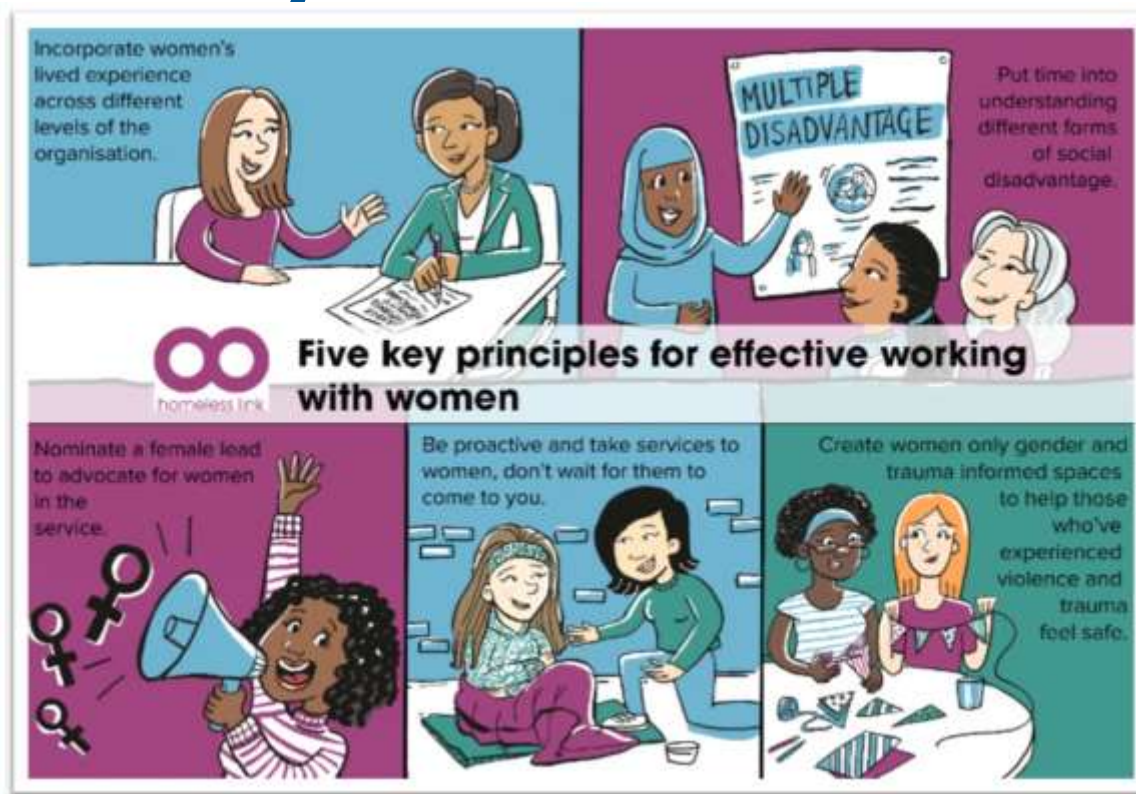


## Annual Conference & Best Practice Awards

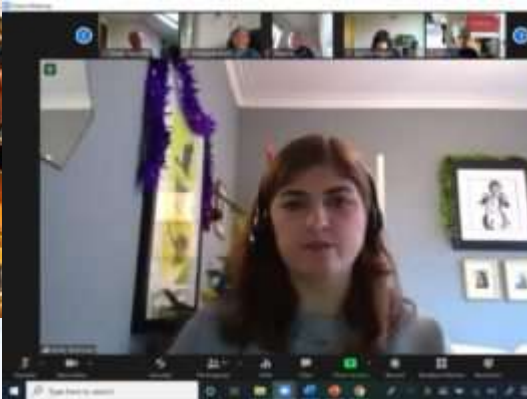
- **SIGBI Annual Conference** held around the Federation – this year will be in London (3 – 4 November 2023)
- **Federation PA Committee (FPAC)** meeting usually held before Annual Conference with PAOs from the Federation. It is now held on Zoom so all members can attend - next mtg on **Sat 28 Oct, 1pm?** - time to be confirmed
- **Best Practice Awards** – Rules are changing but to win projects must focus on Women & Girls, understand which P they support, have clear aims and outcomes, be well managed and involve all club members.



# Programme Action - “when women thrive everyone benefits”



# SILC Programme Action



- Supporting Refuges & Services for Women
- Foodbanks

*Women inspiring action,  
transforming lives*

**Thank you**

**Questions?**

# GETTING INVOLVED

- **Programme Action** - raising awareness, practical action, advocacy, fundraising, ideas, working with other agencies, using your expertise, writing reports for our UN status-SIGBI Programme Database
- **Membership** - promoting SI and being a Soroptimist, encouraging other women to attend meetings/contribute to fundraising or other PA activities
- **Managing/Developing** your Club/Region which could lead on to taking roles in SIGBI and/or SI

# HOW to get involved

## In your First Year or So

- Attend some Club Meetings
- Join in with at least 1 Programme Action activity
- Get to know other members in your Club
- Talk to friends about being a Soroptimist - invite them to attend a talk/fundraiser
- Attend a Regional Meeting

## Other Ways

- Contribute to organising a Club PA activity or event
- Think about other ways you can contribute e.g getting your company to sponsor a fundraiser
- Attend a Federation Conference

# **DISCUSSION - Getting involved**

## **Ideas?**

## WHAT NEXT?

- **Get involved in your Club!**
- **Keep in touch with SIGBI activities via the HUB**
- **Support the Region's (and your Club's) Social Media**
- **Attend the Next Regional Meeting - AGM Sat 7 Oct, HR Day Sat 9 Dec both 10-1pm on Zoom**
- **Register for SIGBI Conference - London 3-4 Nov at Friends Mtg House, Euston Rd, London**
- **Get in touch if you think you can help with Regional Activities - [silondonchilterns@hotmail.com](mailto:silondonchilterns@hotmail.com)**

# THANK YOU

**For joining in this evening,  
being a Soroptimist**

and a force for change to improve the lives of women and girls locally, nationally and internationally.